

HEATING INPUT: 40,000–120,000 BTU/H

**SINGLE-STAGE, MULTI-SPEED  
ECM GAS FURNACE  
UP TO 92% AFUE**



**Contents**

Nomenclature..... 2  
 Product Specifications..... 3  
 Dimensions ..... 4  
 Airflow Specifications..... 5  
 Wiring Diagram..... 10  
 Accessories ..... 11

**Standard Features**

- Heavy-duty aluminized-steel tubular heat exchanger
- Stainless-steel secondary heat exchanger
- Single-stage gas valve
- Durable Silicon Nitride igniter
- Multi-speed ECM blower motor
- Quiet single-speed induced draft blower
- Self-diagnostic control board
- All models comply with California 40 ng/J Low NOx emissions standard
- Can no longer be installed in California’s South Coast Air Quality Management District (SCAQMD) on or after October 1, 2019.
- AHRI Certified; ETL Listed

**Cabinet Features**

- Designed for multi-position installation — GMES92: upflow, horizontal left or right
- Certified for direct vent (2-pipe) or non-direct vent (1-pipe)
- Easy-to-install top venting with optional side venting — GMES92/upflow models only
- Convenient left or right connection for gas and electrical service
- Cabinet air leakage ( $Q_{Leak} \leq 2\%$ )
- Heavy-gauge steel cabinet with durable finish
- Foil-faced insulated heat exchanger cabinet
- Airtight solid bottom or side return with easy-cut tabs for effortless removal in bottom air-inlet applications



\* Complete warranty details available from your local dealer or at [www.abcoolairhvac.com](http://www.abcoolairhvac.com). To receive the Lifetime Heat Exchanger Limited Warranty (good for as long as you own your home), 10-Year Unit Replacement Limited Warranty and 10-Year Parts Limited Warranty, online registration must be completed within 60 days of installation. Online registration is not required in California or Quebec.

|                      | <b>G</b>                                                                    | <b>M</b> | <b>E</b> | <b>S</b> | <b>92</b>  | <b>060</b>   | <b>3</b>  | <b>B</b>  | <b>N</b>  | <b>**</b>    |                                                                              |
|----------------------|-----------------------------------------------------------------------------|----------|----------|----------|------------|--------------|-----------|-----------|-----------|--------------|------------------------------------------------------------------------------|
|                      | <b>1</b>                                                                    | <b>2</b> | <b>3</b> | <b>4</b> | <b>5,6</b> | <b>7,8,9</b> | <b>10</b> | <b>11</b> | <b>12</b> | <b>13,14</b> |                                                                              |
| <b>BRAND</b>         | G- <i>ABCOOLAIR</i> Brand                                                   |          |          |          |            |              |           |           |           |              | <b>ENGINEERING</b>                                                           |
|                      |                                                                             |          |          |          |            |              |           |           |           |              | Major / Minor Revisions<br>* Not used for inventory control.                 |
| <b>CONFIGURATION</b> | M- Upflow/Horizontal<br>C- Downflow/Horizontal                              |          |          |          |            |              |           |           |           |              | <b>NOX</b>                                                                   |
|                      |                                                                             |          |          |          |            |              |           |           |           |              | N- Low NOx                                                                   |
| <b>MOTOR</b>         | V- Variable Speed ECM / ComfortNet<br>E- Multi-Speed ECM<br>S- Single Speed |          |          |          |            |              |           |           |           |              | <b>CABINET WIDTH</b>                                                         |
|                      |                                                                             |          |          |          |            |              |           |           |           |              | A- 14"                      C- 21"<br>B- 17½"                    D- 24½"     |
| <b>GAS VALVE</b>     | M- Modulating<br>C- Two- Stage<br>S- Single Stage                           |          |          |          |            |              |           |           |           |              | <b>MAXIMUM CFM</b>                                                           |
|                      |                                                                             |          |          |          |            |              |           |           |           |              | 2- 800 CFM                4- 1600 CFM<br>3- 1200 CFM             5- 2000 CFM |
| <b>AFUE</b>          | 97- 97% AFUE            96- 96% AFUE<br>92- 92% AFUE                        |          |          |          |            |              |           |           |           |              | <b>MBTU/H</b>                                                                |
|                      |                                                                             |          |          |          |            |              |           |           |           |              | 040- 40,000 BTU/h<br>060- 60,000 BTU/h<br>120- 120,000 BTU/h                 |

|                                             | GMES92<br>0403AN                                    | GMES92<br>0603BN                   | GMES92<br>0803BN                   | GMES92<br>0804CN                   | GMES92<br>0805CN                                    | GMES92<br>1004CN                   | GMES92<br>1005CN                                    | GMES92<br>1205DN                                    |
|---------------------------------------------|-----------------------------------------------------|------------------------------------|------------------------------------|------------------------------------|-----------------------------------------------------|------------------------------------|-----------------------------------------------------|-----------------------------------------------------|
| <b>HEATING DATA</b>                         |                                                     |                                    |                                    |                                    |                                                     |                                    |                                                     |                                                     |
| High Fire Input <sup>1</sup>                | 40,000                                              | 60,000                             | 80,000                             | 80,000                             | 80,000                                              | 100,000                            | 100,000                                             | 120,000                                             |
| High Fire Output <sup>1</sup>               | 36,840                                              | 55,260                             | 73,680                             | 73,680                             | 73,680                                              | 92,100                             | 92,100                                              | 110,520                                             |
| AFUE <sup>2</sup>                           | 92                                                  | 92                                 | 92                                 | 92                                 | 92                                                  | 92                                 | 92                                                  | 92                                                  |
| Temperature Rise Range (°F)                 | 30-60                                               | 35-65                              | 35-65                              | 35-65                              | 25-55                                               | 35-65                              | 35-65                                               | 35-65                                               |
| Vent Diameter <sup>3</sup>                  | 2" - 3"                                             | 2" - 3"                            | 2" - 3"                            | 2" - 3"                            | 2" - 3"                                             | 2" - 3"                            | 2" - 3"                                             | 3"                                                  |
| NO. OF BURNERS                              | 2                                                   | 3                                  | 4                                  | 4                                  | 4                                                   | 5                                  | 5                                                   | 6                                                   |
| <b>CIRCULATOR BLOWER</b>                    |                                                     |                                    |                                    |                                    |                                                     |                                    |                                                     |                                                     |
| Available AC @ 0.5" ESP                     | 1.5- 3                                              | 1.5- 3                             | 1.5- 3                             | 43,528                             | 3- 5                                                | 3- 5                               | 3- 5                                                | 3- 5                                                |
| Size (D x W)                                | 10" x 6"                                            | 10" x 8"                           | 10" x 8"                           | 10" x 10"                          | 11" x 10"                                           | 10" x 10"                          | 11" x 10"                                           | 11" x 11"                                           |
| Horsepower @ 1075 RPM                       | 1/2                                                 | 1/2                                | 1/2                                | 3/4                                | 1                                                   | 3/4                                | 1                                                   | 1                                                   |
| Speed                                       | 5                                                   | 5                                  | 5                                  | 5                                  | 5                                                   | 5                                  | 5                                                   | 5                                                   |
| <b>FILTER SIZE (IN<sup>2</sup>) (QTY)</b>   | (1) 16 x 25<br>(side) or (1)<br>14 X 25<br>(bottom) | (1) 16 x 25<br>(side or<br>bottom) | (1) 16 x 25<br>(side or<br>bottom) | (1) 16 x 25<br>(side or<br>bottom) | (1) 20 x 25<br>(bottom)<br>or (2) 16 x 25<br>(side) | (1) 16 x 25<br>(side or<br>bottom) | (1) 20 x 25<br>(bottom)<br>or (2) 16 x 25<br>(side) | (1) 20 x 25<br>(bottom)<br>or (2) 16 x 25<br>(side) |
| <b>ELECTRICAL DATA</b>                      |                                                     |                                    |                                    |                                    |                                                     |                                    |                                                     |                                                     |
| Min. Circuit Ampacity <sup>4</sup>          | 10.3                                                | 10.3                               | 10.3                               | 14.1                               | 16.9                                                | 14.1                               | 16.9                                                | 16.9                                                |
| Max. Overcurrent Device (amps) <sup>5</sup> | 15                                                  | 15                                 | 15                                 | 15                                 | 20                                                  | 15                                 | 20                                                  | 20                                                  |
| <b>SHIPPING WEIGHT (LBS)</b>                | 106                                                 | 114                                | 117                                | 139                                | 140                                                 | 141                                | 141                                                 | 154                                                 |

<sup>1</sup> Natural Gas BTU/h

<sup>2</sup> DOE AFUE based upon Isolated Combustion System (ICS)

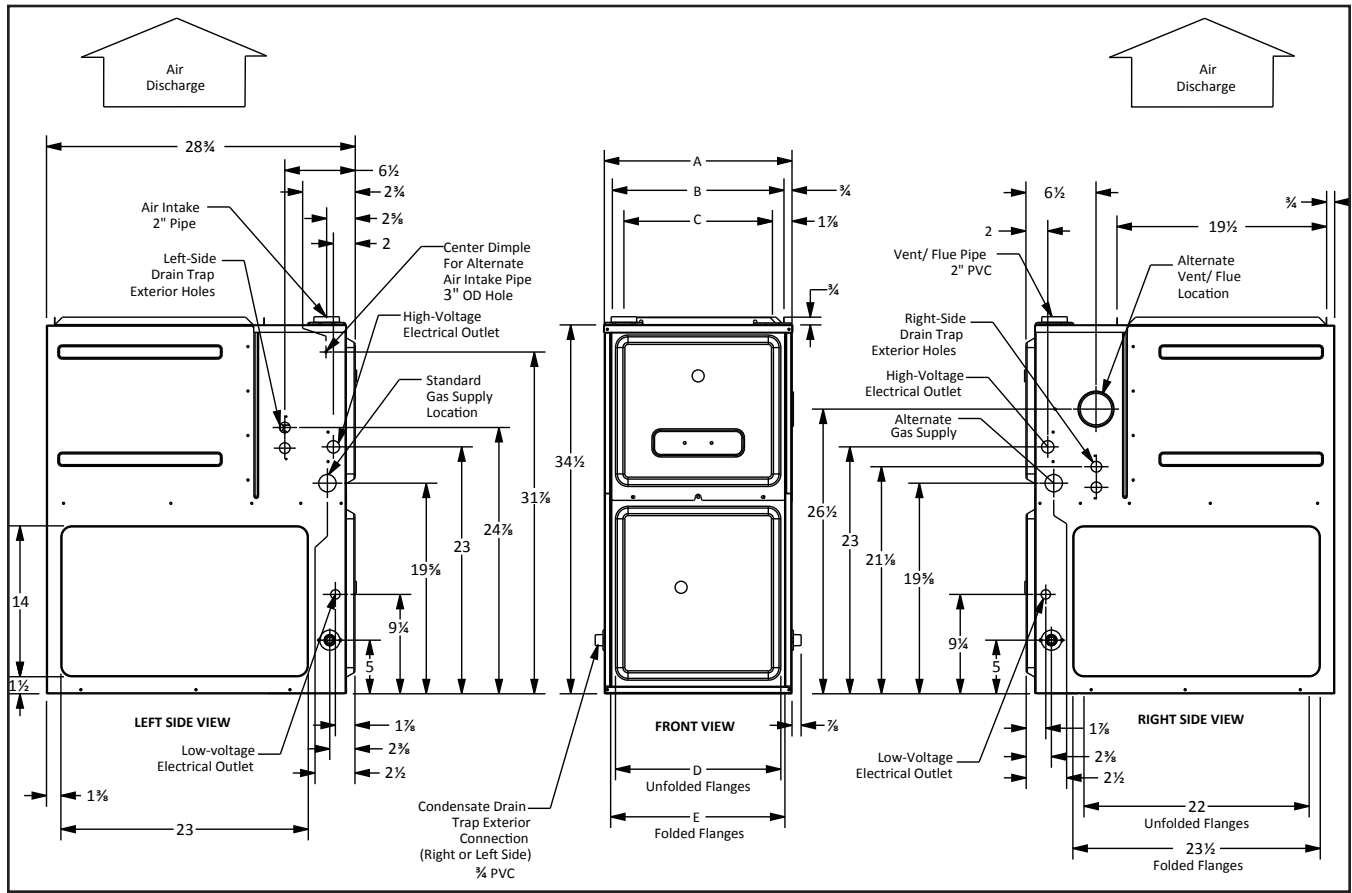
<sup>3</sup> Installer must supply one or two PVC pipes: one for combustion air (optional) and one for the flue outlet (required). Vent pipe must be either 2" or 3" in diameter, depending upon furnace input, number of elbows, length of run and installation (1 or 2 pipes). The optional Combustion Air Pipe is dependent on installation/code requirements and must be 2" or 3" diameter PVC.

<sup>4</sup> Minimum Circuit Ampacity = (1.25 x Circulator Blower Amps) + ID Blower amps. Wire size should be determined in accordance with National Electrical Codes. Extensive wire runs will require larger wire sizes.

<sup>5</sup> Maximum Overcurrent Protection Device refers to maximum recommended fuse or circuit breaker size. May use fuses or HACR-type circuit breakers of the same size as noted.

**NOTES**

- All furnaces are manufactured for use on 115 VAC, 60 Hz, single-phase electrical supply.
- Gas Service Connection ½" FPT
- Important: Size fuses and wires properly and make electrical connections in accordance with the National Electrical Code and/or all existing local codes.
- For bottom return: Failure to unfold flanges may reduce airflow by up to 18%. This could result in performance and noise issues.
- For servicing or cleaning, a 24" front clearance is required. Unit connections (electrical, flue and drain) may necessitate greater clearances than the minimum clearances listed above. In all cases, accessibility clearance must take precedence over clearances from the enclosure where accessibility clearances are greater.



| MODEL        | HEATING CAPACITY <sup>1</sup> |         | AFUE % | TONS A/C <sup>2</sup> | DIMENSIONS |         |         | SHIP WEIGHT (LBS) |
|--------------|-------------------------------|---------|--------|-----------------------|------------|---------|---------|-------------------|
|              | INPUT                         | OUTPUT  |        |                       | W"         | D"      | H"      |                   |
| GMES920403A* | 40,000                        | 36,840  | 92     | 3                     | 14"        | 28 1/2" | 34 1/2" | 106               |
| GMES920603B* | 60,000                        | 55,260  | 92     | 3                     | 17 1/2"    | 28 1/2" | 34 1/2" | 114               |
| GMES920803B* | 80,000                        | 73,680  | 92     | 3                     | 17 1/2"    | 28 1/2" | 34 1/2" | 117               |
| GMES920804C* | 80,000                        | 73,680  | 92     | 4                     | 21"        | 28 1/2" | 34 1/2" | 139               |
| GMES920805C* | 80,000                        | 73,680  | 92     | 5                     | 21"        | 28 1/2" | 34 1/2" | 140               |
| GMES921004C* | 100,000                       | 92,100  | 92     | 4                     | 21"        | 28 1/2" | 34 1/2" | 141               |
| GMES921005C* | 100,000                       | 92,100  | 92     | 5                     | 21"        | 28 1/2" | 34 1/2" | 142               |
| GMES921205D* | 120,000                       | 110,520 | 92     | 5                     | 24 1/2"    | 28 1/2" | 34 1/2" | 154               |

**MINIMUM CLEARANCES TO COMBUSTIBLE MATERIALS**

| POSITION   | SIDES | REAR | FRONT | BOTTOM | FLUE | TOP |
|------------|-------|------|-------|--------|------|-----|
| Upflow     | 0"    | 0"   | 3"    | C      | 0"   | 1"  |
| Horizontal | 6"    | 0"   | 3"    | C      | 0"   | 6"  |

C = If placed on combustible floor, the floor MUST be wood ONLY.

CFM & TEMPERATURE RISE VS. EXTERNAL STATIC PRESSURE

| MODEL        | DIP SWITCHES S2-1, S2-2 | EXTERNAL STATIC PRESSURE, (INCHES WATER COLUMN) |      |      |      |      |      |      |      |      |      |      |      |      |
|--------------|-------------------------|-------------------------------------------------|------|------|------|------|------|------|------|------|------|------|------|------|
|              |                         | 0.1                                             |      | 0.2  |      | 0.3  |      | 0.4  |      | 0.5  |      | 0.6  | 0.7  | 0.8  |
|              |                         | CFM                                             | RISE | CFM  | RISE | CFM  | RISE | CFM  | RISE | CFM  | RISE | CFM  | CFM  | CFM  |
| GMES92 0403A | OFF OFF                 | 628                                             | 54   | 582  | 59   | 530  | N/A  | 478  | N/A  | 428  | N/A  | 370  | 319  | 282  |
|              | ON OFF*                 | 806                                             | 42   | 762  | 45   | 719  | 47   | 676  | 50   | 633  | 54   | 594  | 551  | 506  |
|              | ON ON**                 | 927                                             | 37   | 883  | 39   | 844  | 40   | 808  | 42   | 793  | 43   | 756  | 719  | 680  |
|              | OFF ON**                | 1111                                            | 31   | 1071 | 32   | 1033 | 33   | 1002 | 34   | 971  | 35   | 936  | 905  | 871  |
| GMES92 0603B | OFF OFF                 | 725                                             | N/A  | 662  | N/A  | 599  | N/A  | 519  | N/A  | 479  | N/A  | 418  | 348  | 285  |
|              | ON OFF*                 | 1068                                            | 48   | 1018 | 50   | 971  | 53   | 926  | 55   | 880  | 58   | 834  | 789  | 767  |
|              | ON ON                   | 940                                             | 54   | 891  | 57   | 836  | 61   | 787  | 65   | 762  | N/A  | 714  | 666  | 619  |
|              | OFF ON**                | 1139                                            | N/A  | 1089 | N/A  | 1040 | N/A  | 998  | N/A  | 958  | N/A  | 911  | 870  | 829  |
| GMES92 0803B | OFF OFF                 | 737                                             | 92   | 669  | 102  | 609  | 112  | 550  | 124  | 490  | 139  | 425  | 361  | 303  |
|              | ON OFF*                 | 1223                                            | 56   | 1171 | 58   | 1125 | 61   | 1081 | 63   | 1036 | 66   | 987  | 945  | 905  |
|              | ON ON                   | 983                                             | 69   | 922  | 74   | 870  | 78   | 818  | 83   | 793  | 86   | 747  | 696  | 645  |
|              | OFF ON                  | 1160                                            | 59   | 1112 | 61   | 1066 | 64   | 1020 | 67   | 977  | 70   | 933  | 889  | 849  |
| GMES92 0804C | OFF OFF                 | 795                                             | N/A  | 721  | N/A  | 646  | N/A  | 580  | N/A  | 507  | N/A  | 399  | 326  | 275  |
|              | ON OFF*                 | 1417                                            | 48   | 1378 | 49   | 1324 | 51   | 1284 | 53   | 1238 | 55   | 1191 | 1146 | 1092 |
|              | ON ON**                 | 1587                                            | N/A  | 1541 | N/A  | 1496 | N/A  | 1450 | N/A  | 1411 | N/A  | 1383 | 1339 | 1298 |
|              | OFF ON**                | 1794                                            | N/A  | 1733 | N/A  | 1694 | N/A  | 1661 | N/A  | 1623 | N/A  | 1591 | 1544 | 1508 |
| GMES92 0805C | OFF OFF                 | 761                                             | N/A  | 685  | N/A  | 608  | N/A  | 540  | N/A  | 471  | N/A  | 369  | 302  | 262  |
|              | ON OFF*                 | 1439                                            | 47   | 1395 | 49   | 1364 | 50   | 1316 | 52   | 1270 | 54   | 1227 | 1181 | 1135 |
|              | ON ON**                 | 1596                                            | N/A  | 1552 | N/A  | 1508 | N/A  | 1467 | N/A  | 1425 | N/A  | 1405 | 1354 | 1314 |
|              | OFF ON**                | 1800                                            | N/A  | 1757 | N/A  | 1716 | N/A  | 1680 | N/A  | 1644 | N/A  | 1605 | 1570 | 1528 |
| GMES92 1004C | OFF OFF                 | 814                                             | N/A  | 741  | N/A  | 661  | N/A  | 592  | N/A  | 523  | N/A  | 451  | 377  | 306  |
|              | ON OFF*                 | 1596                                            | 53   | 1539 | 55   | 1485 | 57   | 1443 | 59   | 1401 | 61   | 1372 | 1325 | 1280 |
|              | ON ON                   | 1434                                            | 59   | 1369 | 62   | 1317 | 65   | 1273 | N/A  | 1228 | N/A  | 1178 | 1129 | 1081 |
|              | OFF ON**                | 1796                                            | N/A  | 1744 | N/A  | 1691 | N/A  | 1648 | N/A  | 1606 | N/A  | 1568 | 1533 | 1493 |
| GMES92 1005C | OFF OFF                 | 804                                             | N/A  | 750  | N/A  | 671  | N/A  | 598  | N/A  | 539  | N/A  | 471  | 390  | 322  |
|              | ON OFF*                 | 1624                                            | 52   | 1560 | 55   | 1508 | 56   | 1465 | 58   | 1422 | 60   | 1389 | 1338 | 1295 |
|              | ON ON                   | 1440                                            | 59   | 1390 | 61   | 1335 | 64   | 1288 | N/A  | 1236 | N/A  | 1186 | 1137 | 1090 |
|              | OFF ON**                | 1812                                            | N/A  | 1755 | N/A  | 1708 | N/A  | 1662 | N/A  | 1623 | N/A  | 1585 | 1548 | 1507 |
| GMES92 1205D | OFF OFF                 | 1250                                            | N/A  | 1003 | N/A  | 868  | N/A  | 788  | N/A  | 669  | N/A  | 572  | 488  | 406  |
|              | ON OFF*                 | 2110                                            | 48   | 2058 | 50   | 2008 | 51   | 1957 | 52   | 1906 | 54   | 1852 | 1800 | 1750 |
|              | ON ON                   | 1536                                            | N/A  | 1462 | N/A  | 1408 | N/A  | 1335 | N/A  | 1258 | N/A  | 1185 | 1109 | 1026 |
|              | OFF ON                  | 1884                                            | 54   | 1821 | 56   | 1757 | 58   | 1698 | 60   | 1628 | 63   | 1550 | 1492 | 1422 |

<sup>1</sup> at 0.5" ESP

Notes:

- CFM in chart is without filter(s). Filters do not ship with this furnace, but must be provided by the installer. If the furnace requires two return filters, this chart assumes both filters are installed.
- All furnaces ship as high-speed cooling and medium-speed heating. Installer must adjust blower cooling and heating speed as needed.
- For most jobs, about 400 CFM per ton when cooling is desirable.
- INSTALLATION IS TO BE ADJUSTED TO OBTAIN TEMPERATURE RISE WITHIN THE RANGE SPECIFIED ON THE RATING PLATE.
- This chart is for information only. For satisfactory operation, external static pressure must not exceed value shown on the rating plate.
- The dashed (---) areas indicate a temperature rise not recommended for this model.
- At higher altitudes, a properly derated unit will have approximately the same temperature rise at a particular CFM, while ESP at the CFM will be lower.

MINIMUM FILTER SIZES

|                                      | GMES92 0403ANA                             | GMES92 0603BNA               | GMES92 0803BNA | GMES92 0804CNA | GMES92 0805CNA                             | GMES92 1004CNA               | GMES92 1005CNA                             | GMES92 1205DNA |
|--------------------------------------|--------------------------------------------|------------------------------|----------------|----------------|--------------------------------------------|------------------------------|--------------------------------------------|----------------|
| Filter Size (in <sup>2</sup> ) (Qty) | (1) 16 x 25 (side) or (1) 14 x 25 (bottom) | (1) 16 x 25 (side or bottom) |                |                | (1) 20 x 25 (bottom) or (2) 16 x 25 (side) | (1) 16 x 25 (side or bottom) | (1) 20 x 25 (bottom) or (2) 16 x 25 (side) |                |

Note: Other size filters of equal or greater dimensions may be used. Filters may also be centrally located.

CFM & TEMPERATURE RISE VS. EXTERNAL STATIC PRESSURE

| MODEL        | DIP SWITCHES S2-3, S2-4 | EXTERNAL STATIC PRESSURE, (INCHES WATER COLUMN) |      |      |      |      |      |      |      |      |      |
|--------------|-------------------------|-------------------------------------------------|------|------|------|------|------|------|------|------|------|
|              |                         | 0.1                                             | 0.2  | 0.3  | 0.4  | 0.5  | 0.6  | 0.7  | 0.8  | 0.9  | 1    |
|              |                         | CFM                                             | CFM  | CFM  | CFM  | CFM  | CFM  | CFM  | CFM  | CFM  | CFM  |
| GMES92 0403A | OFF OFF*                | 628                                             | 582  | 530  | 478  | 428  | 370  | 319  | 282  | 239  | 201  |
|              | ON OFF                  | 806                                             | 762  | 719  | 676  | 633  | 594  | 551  | 506  | 463  | 418  |
|              | OFF ON                  | 1111                                            | 1071 | 1033 | 1002 | 971  | 936  | 905  | 871  | 839  | 807  |
|              | ON ON                   | 1359                                            | 1322 | 1290 | 1258 | 1229 | 1203 | 1176 | 1148 | 1122 | 1095 |
| GMES92 0603B | OFF OFF*                | 725                                             | 662  | 599  | 519  | 479  | 418  | 348  | 285  | 239  | 207  |
|              | ON OFF                  | 1068                                            | 1018 | 971  | 926  | 880  | 834  | 789  | 767  | 725  | 679  |
|              | OFF ON                  | 1139                                            | 1089 | 1040 | 998  | 958  | 911  | 870  | 829  | 806  | 771  |
|              | ON ON                   | 1378                                            | 1337 | 1301 | 1264 | 1223 | 1188 | 1150 | 1113 | 1073 | 971  |
| GMES92 0803B | OFF OFF*                | 737                                             | 669  | 609  | 550  | 490  | 425  | 361  | 303  | 251  | 208  |
|              | ON OFF                  | 1223                                            | 1171 | 1125 | 1081 | 1036 | 987  | 945  | 905  | 859  | 838  |
|              | OFF ON                  | 1160                                            | 1112 | 1066 | 1020 | 977  | 933  | 889  | 849  | 824  | 780  |
|              | ON ON                   | 1431                                            | 1394 | 1358 | 1322 | 1281 | 1241 | 1204 | 1163 | 1131 | 1098 |
| GMES92 0804C | OFF OFF*                | 795                                             | 721  | 646  | 580  | 507  | 399  | 326  | 275  | 235  | 207  |
|              | ON OFF                  | 1417                                            | 1378 | 1324 | 1284 | 1238 | 1191 | 1146 | 1092 | 1055 | 1010 |
|              | OFF ON                  | 1794                                            | 1733 | 1694 | 1661 | 1623 | 1591 | 1544 | 1508 | 1469 | 1426 |
|              | ON ON                   | 1819                                            | 1771 | 1727 | 1689 | 1653 | 1615 | 1574 | 1538 | 1497 | 1465 |
| GMES92 0805C | OFF OFF*                | 761                                             | 685  | 608  | 540  | 471  | 369  | 302  | 262  | 224  | 187  |
|              | ON OFF                  | 1439                                            | 1395 | 1364 | 1316 | 1270 | 1227 | 1181 | 1135 | 1093 | 1051 |
|              | OFF ON                  | 1800                                            | 1757 | 1716 | 1680 | 1644 | 1605 | 1570 | 1528 | 1488 | 1450 |
|              | ON ON                   | 2186                                            | 2148 | 2113 | 2082 | 2016 | 2005 | 1981 | 1952 | 1936 | 1903 |
| GMES92 1004C | OFF OFF*                | 814                                             | 741  | 661  | 592  | 523  | 451  | 377  | 306  | 272  | 215  |
|              | ON OFF                  | 1596                                            | 1539 | 1485 | 1443 | 1401 | 1372 | 1325 | 1280 | 1241 | 1192 |
|              | OFF ON                  | 1796                                            | 1744 | 1691 | 1648 | 1606 | 1568 | 1533 | 1493 | 1445 | 1409 |
|              | ON ON                   | 1833                                            | 1772 | 1724 | 1677 | 1636 | 1601 | 1563 | 1521 | 1484 | 1441 |
| GMES92 1005C | OFF OFF*                | 804                                             | 750  | 671  | 598  | 539  | 471  | 390  | 322  | 276  | 221  |
|              | ON OFF                  | 1624                                            | 1560 | 1508 | 1465 | 1422 | 1389 | 1338 | 1295 | 1253 | 1211 |
|              | OFF ON                  | 1812                                            | 1755 | 1708 | 1662 | 1623 | 1585 | 1548 | 1507 | 1466 | 1425 |
|              | ON ON                   | 2223                                            | 2176 | 2127 | 2084 | 2046 | 2014 | 1993 | 1977 | 1948 | 1913 |
| GMES92 1205D | OFF OFF*                | 1250                                            | 1003 | 868  | 788  | 669  | 572  | 488  | 406  | 330  | 236  |
|              | ON OFF                  | 2110                                            | 2058 | 2008 | 1957 | 1906 | 1852 | 1800 | 1750 | 1697 | 1646 |
|              | OFF ON                  | 1884                                            | 1821 | 1757 | 1698 | 1628 | 1550 | 1492 | 1422 | 1375 | 1305 |
|              | ON ON                   | 2233                                            | 2177 | 2129 | 2085 | 2036 | 1981 | 1928 | 1881 | 1833 | 1783 |

<sup>1</sup> at 0.5" ESP

Notes:

- CFM in chart is without filter(s). Filters do not ship with this furnace, but must be provided by the installer. If the furnace requires two return filters, this chart assumes both filters are installed.
- All furnaces ship as high-speed cooling and medium-speed heating. Installer must adjust blower cooling and heating speed as needed.

CFM & TEMPERATURE RISE VS. EXTERNAL STATIC PRESSURE

| MODEL           | DIP SWITCHES<br>S1-1, S1-2,<br>S1-3 | EXTERNAL STATIC PRESSURE, (INCHES WATER COLUMN) |      |      |      |      |      |      |      |      |      |
|-----------------|-------------------------------------|-------------------------------------------------|------|------|------|------|------|------|------|------|------|
|                 |                                     | 0.1                                             | 0.2  | 0.3  | 0.4  | 0.5  | 0.6  | 0.7  | 0.8  | 0.9  | 1    |
|                 |                                     | CFM                                             | CFM  | CFM  | CFM  | CFM  | CFM  | CFM  | CFM  | CFM  | CFM  |
| GMES92<br>0403A | OFF OFF OFF                         | 628                                             | 582  | 530  | 478  | 428  | 370  | 319  | 282  | 239  | 201  |
|                 | OFF ON ON                           | 628                                             | 582  | 530  | 478  | 428  | 370  | 319  | 282  | 239  | 201  |
|                 | ON OFF ON                           | 628                                             | 582  | 530  | 478  | 428  | 370  | 319  | 282  | 239  | 201  |
|                 | ON ON ON                            | 628                                             | 582  | 530  | 478  | 428  | 370  | 319  | 282  | 239  | 201  |
|                 | ON OFF OFF                          | 806                                             | 762  | 719  | 676  | 633  | 594  | 551  | 506  | 463  | 418  |
|                 | ON ON OFF                           | 927                                             | 883  | 844  | 808  | 793  | 756  | 719  | 680  | 646  | 605  |
|                 | OFF ON OFF                          | 1111                                            | 1071 | 1033 | 1002 | 971  | 936  | 905  | 871  | 839  | 807  |
|                 | OFF OFF ON*                         | 1359                                            | 1322 | 1290 | 1258 | 1229 | 1203 | 1176 | 1148 | 1122 | 1095 |
| GMES92<br>0603B | OFF OFF OFF                         | 725                                             | 662  | 599  | 519  | 479  | 418  | 348  | 285  | 239  | 207  |
|                 | OFF ON ON                           | 725                                             | 662  | 599  | 519  | 479  | 418  | 348  | 285  | 239  | 207  |
|                 | ON OFF ON                           | 725                                             | 662  | 599  | 519  | 479  | 418  | 348  | 285  | 239  | 207  |
|                 | ON ON ON                            | 725                                             | 662  | 599  | 519  | 479  | 418  | 348  | 285  | 239  | 207  |
|                 | ON OFF OFF                          | 1068                                            | 1018 | 971  | 926  | 880  | 834  | 789  | 767  | 725  | 679  |
|                 | ON ON OFF                           | 940                                             | 891  | 836  | 787  | 762  | 714  | 666  | 619  | 570  | 520  |
|                 | OFF ON OFF                          | 1139                                            | 1089 | 1040 | 998  | 958  | 911  | 870  | 829  | 806  | 771  |
|                 | OFF OFF ON*                         | 1378                                            | 1337 | 1301 | 1264 | 1223 | 1188 | 1150 | 1113 | 1073 | 971  |
| GMES92<br>0803B | OFF OFF OFF                         | 737                                             | 669  | 609  | 550  | 490  | 425  | 361  | 303  | 251  | 208  |
|                 | OFF ON ON                           | 737                                             | 669  | 609  | 550  | 490  | 425  | 361  | 303  | 251  | 208  |
|                 | ON OFF ON                           | 737                                             | 669  | 609  | 550  | 490  | 425  | 361  | 303  | 251  | 208  |
|                 | ON ON ON                            | 737                                             | 669  | 609  | 550  | 490  | 425  | 361  | 303  | 251  | 208  |
|                 | ON OFF OFF                          | 1223                                            | 1171 | 1125 | 1081 | 1036 | 987  | 945  | 905  | 859  | 838  |
|                 | ON ON OFF                           | 983                                             | 922  | 870  | 818  | 793  | 747  | 696  | 645  | 598  | 546  |
|                 | OFF ON OFF                          | 1160                                            | 1112 | 1066 | 1020 | 977  | 933  | 889  | 849  | 824  | 780  |
|                 | OFF OFF ON*                         | 1431                                            | 1394 | 1358 | 1322 | 1281 | 1241 | 1204 | 1163 | 1131 | 1098 |
| GMES92<br>0804C | OFF OFF OFF                         | 795                                             | 721  | 646  | 580  | 507  | 399  | 326  | 275  | 235  | 207  |
|                 | OFF ON ON                           | 795                                             | 721  | 646  | 580  | 507  | 399  | 326  | 275  | 235  | 207  |
|                 | ON OFF ON                           | 795                                             | 721  | 646  | 580  | 507  | 399  | 326  | 275  | 235  | 207  |
|                 | ON ON ON                            | 795                                             | 721  | 646  | 580  | 507  | 399  | 326  | 275  | 235  | 207  |
|                 | ON OFF OFF                          | 1417                                            | 1378 | 1324 | 1284 | 1238 | 1191 | 1146 | 1092 | 1055 | 1010 |
|                 | ON ON OFF                           | 1587                                            | 1541 | 1496 | 1450 | 1411 | 1383 | 1339 | 1298 | 1261 | 1215 |
|                 | OFF ON OFF                          | 1794                                            | 1733 | 1694 | 1661 | 1623 | 1591 | 1544 | 1508 | 1469 | 1426 |
|                 | OFF OFF ON*                         | 1819                                            | 1771 | 1727 | 1689 | 1653 | 1615 | 1574 | 1538 | 1497 | 1465 |
| GMES92<br>0805C | OFF OFF OFF                         | 761                                             | 685  | 608  | 540  | 471  | 369  | 302  | 262  | 224  | 187  |
|                 | OFF ON ON                           | 761                                             | 685  | 608  | 540  | 471  | 369  | 302  | 262  | 224  | 187  |
|                 | ON OFF ON                           | 761                                             | 685  | 608  | 540  | 471  | 369  | 302  | 262  | 224  | 187  |
|                 | ON ON ON                            | 761                                             | 685  | 608  | 540  | 471  | 369  | 302  | 262  | 224  | 187  |
|                 | ON OFF OFF                          | 1439                                            | 1395 | 1364 | 1316 | 1270 | 1227 | 1181 | 1135 | 1093 | 1051 |
|                 | ON ON OFF                           | 1596                                            | 1552 | 1508 | 1467 | 1425 | 1405 | 1354 | 1314 | 1272 | 1237 |
|                 | OFF ON OFF                          | 1800                                            | 1757 | 1716 | 1680 | 1644 | 1605 | 1570 | 1528 | 1488 | 1450 |
|                 | OFF OFF ON*                         | 2186                                            | 2148 | 2113 | 2082 | 2016 | 2005 | 1981 | 1952 | 1936 | 1903 |

CFM & TEMPERATURE RISE VS. EXTERNAL STATIC PRESSURE

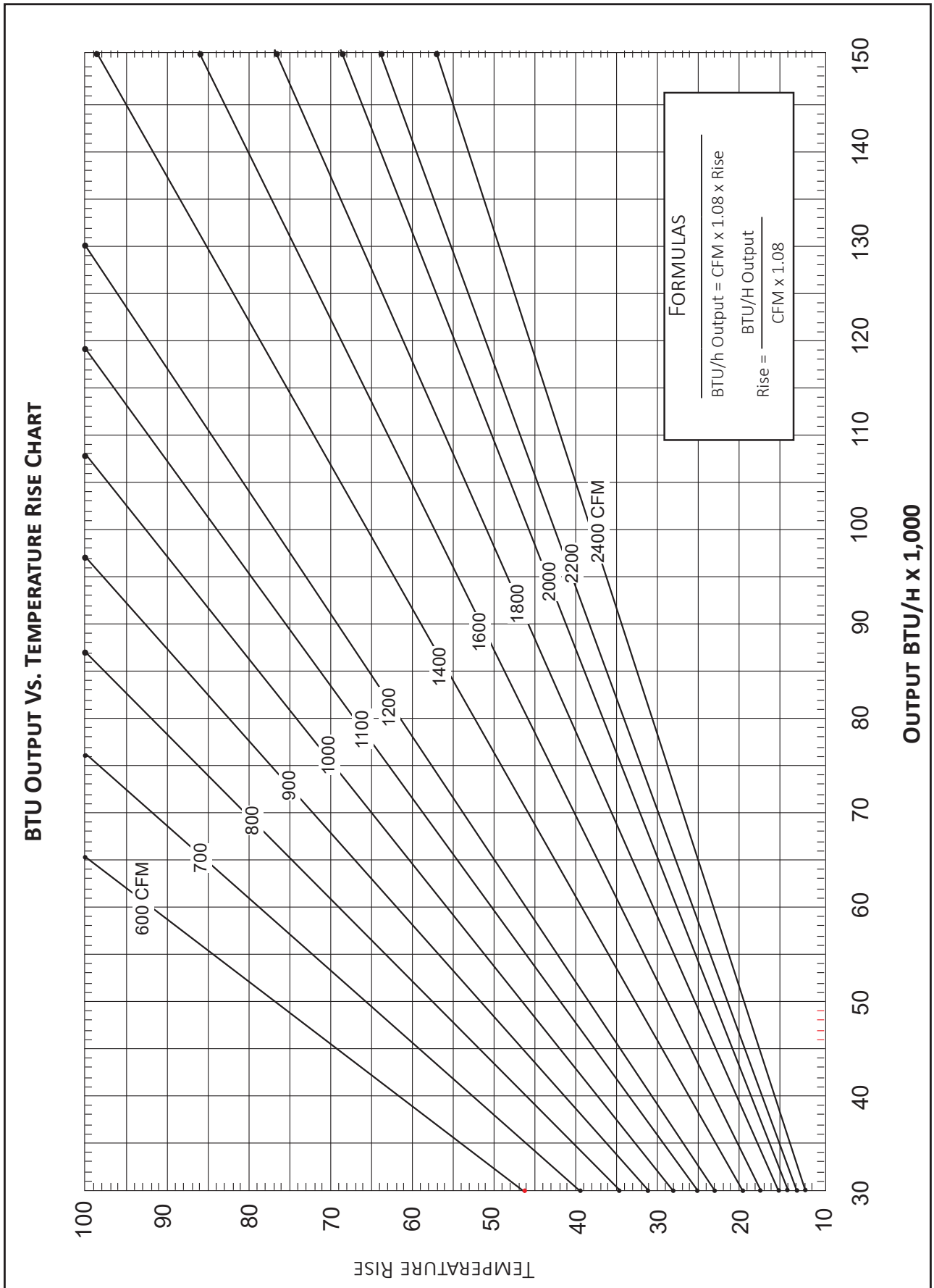
| MODEL           | DIP SWITCHES<br>S1-1, S1-2,<br>S1-3 | EXTERNAL STATIC PRESSURE, (INCHES WATER COLUMN) |      |      |      |      |      |      |      |      |      |
|-----------------|-------------------------------------|-------------------------------------------------|------|------|------|------|------|------|------|------|------|
|                 |                                     | 0.1                                             | 0.2  | 0.3  | 0.4  | 0.5  | 0.6  | 0.7  | 0.8  | 0.9  | 1    |
|                 |                                     | CFM                                             | CFM  | CFM  | CFM  | CFM  | CFM  | CFM  | CFM  | CFM  | CFM  |
| GMES92<br>1004C | OFF OFF OFF                         | 814                                             | 741  | 661  | 592  | 523  | 451  | 377  | 306  | 272  | 215  |
|                 | OFF ON ON                           | 814                                             | 741  | 661  | 592  | 523  | 451  | 377  | 306  | 272  | 215  |
|                 | ON OFF ON                           | 814                                             | 741  | 661  | 592  | 523  | 451  | 377  | 306  | 272  | 215  |
|                 | ON ON ON                            | 814                                             | 741  | 661  | 592  | 523  | 451  | 377  | 306  | 272  | 215  |
|                 | ON OFF OFF                          | 1596                                            | 1539 | 1485 | 1443 | 1401 | 1372 | 1325 | 1280 | 1241 | 1192 |
|                 | ON ON OFF                           | 1434                                            | 1369 | 1317 | 1273 | 1228 | 1178 | 1129 | 1081 | 1030 | 983  |
|                 | OFF ON OFF                          | 1796                                            | 1744 | 1691 | 1648 | 1606 | 1568 | 1533 | 1493 | 1445 | 1409 |
|                 | OFF OFF ON*                         | 1833                                            | 1772 | 1724 | 1677 | 1636 | 1601 | 1563 | 1521 | 1484 | 1441 |
| GMES92<br>1005C | OFF OFF OFF                         | 804                                             | 750  | 671  | 598  | 539  | 471  | 390  | 322  | 276  | 221  |
|                 | OFF ON ON                           | 804                                             | 750  | 671  | 598  | 539  | 471  | 390  | 322  | 276  | 221  |
|                 | ON OFF ON                           | 804                                             | 750  | 671  | 598  | 539  | 471  | 390  | 322  | 276  | 221  |
|                 | ON ON ON                            | 804                                             | 750  | 671  | 598  | 539  | 471  | 390  | 322  | 276  | 221  |
|                 | ON OFF OFF                          | 1624                                            | 1560 | 1508 | 1465 | 1422 | 1389 | 1338 | 1295 | 1253 | 1211 |
|                 | ON ON OFF                           | 1440                                            | 1390 | 1335 | 1288 | 1236 | 1186 | 1137 | 1090 | 1042 | 999  |
|                 | OFF ON OFF                          | 1812                                            | 1755 | 1708 | 1662 | 1623 | 1585 | 1548 | 1507 | 1466 | 1425 |
|                 | OFF OFF ON*                         | 2223                                            | 2176 | 2127 | 2084 | 2046 | 2014 | 1993 | 1977 | 1948 | 1913 |
| GMES92<br>1205D | OFF OFF OFF                         | 1250                                            | 1003 | 868  | 788  | 669  | 572  | 488  | 406  | 330  | 236  |
|                 | OFF ON ON                           | 1250                                            | 1003 | 868  | 788  | 669  | 572  | 488  | 406  | 330  | 236  |
|                 | ON OFF ON                           | 1250                                            | 1003 | 868  | 788  | 669  | 572  | 488  | 406  | 330  | 236  |
|                 | ON ON ON                            | 1250                                            | 1003 | 868  | 788  | 669  | 572  | 488  | 406  | 330  | 236  |
|                 | ON OFF OFF                          | 2110                                            | 2058 | 2008 | 1957 | 1906 | 1852 | 1800 | 1750 | 1697 | 1646 |
|                 | ON ON OFF                           | 1536                                            | 1462 | 1408 | 1335 | 1258 | 1185 | 1109 | 1026 | 941  | 853  |
|                 | OFF ON OFF                          | 1884                                            | 1821 | 1757 | 1698 | 1628 | 1550 | 1492 | 1422 | 1375 | 1305 |
|                 | OFF OFF ON*                         | 2233                                            | 2177 | 2129 | 2085 | 2036 | 1981 | 1928 | 1881 | 1833 | 1783 |

<sup>1</sup> at 0.5" ESP

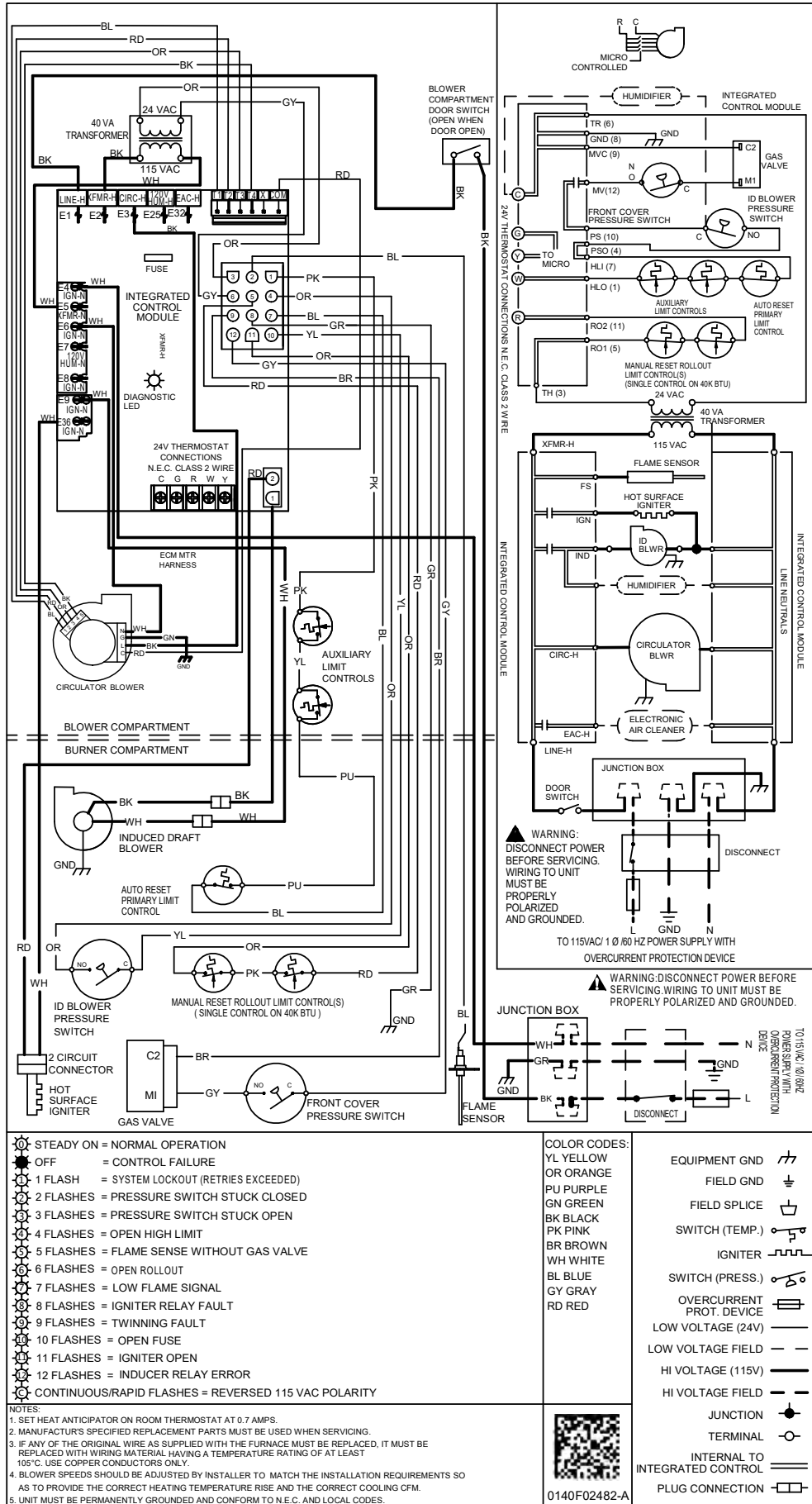
**Notes:**

- CFM in chart is without filter(s). Filters do not ship with this furnace, but must be provided by the installer. If the furnace requires two return filters, this chart assumes both filters are installed.
- All furnaces ship as high-speed cooling and medium-speed heating. Installer must adjust blower cooling and heating speed as needed.
- For most jobs, about 400 CFM per ton when cooling is desirable.
- INSTALLATION IS TO BE ADJUSTED TO OBTAIN TEMPERATURE RISE WITHIN THE RANGE SPECIFIED ON THE RATING PLATE.
- This chart is for information only. For satisfactory operation, external static pressure must not exceed value shown on the rating plate.
- The dashed (----) areas indicate a temperature rise not recommended for this model.
- At higher altitudes, a properly derated unit will have approximately the same temperature rise at a particular CFM, while ESP at the CFM will be lower





# WIRING DIAGRAM



| MODEL       | DESCRIPTION                                           | GMES92<br>0403ANA | GMES92<br>0603BNA | GMES92<br>0803BNA | GMES92<br>0804CNA | GMES92<br>0805CNA | GMES92<br>1004CNA | GMES92<br>1005CNA | GMES92<br>1205DNA |
|-------------|-------------------------------------------------------|-------------------|-------------------|-------------------|-------------------|-------------------|-------------------|-------------------|-------------------|
| CVENT-2     | Concentric Vent Kit (2")                              | √                 | √                 | √                 | √                 | √                 | √                 | √                 | ---               |
| CVENT-3     | Concentric Vent Kit (3")                              | √                 | √                 | √                 | √                 | √                 | √                 | √                 | √                 |
| CFSB17      | Downflow Sub-Base 17.5"                               | ---               | ---               | ---               | ---               | ---               | ---               | ---               | ---               |
| CFSB21      | Downflow Sub-Base 21"                                 | ---               | ---               | ---               | ---               | ---               | ---               | ---               | ---               |
| CFSB24      | Downflow Sub-Base 24"                                 | ---               | ---               | ---               | ---               | ---               | ---               | ---               | ---               |
| RF000142    | Drain Kit-Horizontal Left Vertical Flue               | √                 | √                 | √                 | √                 | √                 | √                 | √                 | √                 |
| EFRO2       | External Filter Rack with 16"x25"<br>Permanent Filter | √                 | √                 | √                 | √                 | ---               | √                 | ---               | ---               |
| 0170K00000S | Flush Mount Vent Kit- 3" or 2"                        | √                 | √                 | √                 | √                 | √                 | √                 | √                 | √                 |
| 0170K00001S | Flush Mount Vent Kit- 2"                              | √                 | √                 | √                 | √                 | √                 | √                 | √                 | ---               |
| AFE18-60A   | Fossil Fuel (Dual Fuel) Kit                           | √                 | √                 | √                 | √                 | √                 | √                 | √                 | √                 |
| HASFK       | High-Altitude Natural Gas Kit                         | TBD               | HASFK-4           | HASFK-4           | HASFK-4           | HASFK-4           | HASFK-4           | HASFK-4           | HASFK-4           |
| HASFK       | High-Altitude LP Gas Kit                              | TBD               | HASFK-4           | HASFK-5           | HASFK-4           | HASFK-4           | HASFK-4           | HASFK-5           | HASFK-4           |
| LPLP03      | Low LP Gas Pressure Switch                            | √                 | √                 | √                 | √                 | √                 | √                 | √                 | √                 |
| LPM-07      | LP Conversion Kits                                    | √                 | √                 | √                 | √                 | √                 | √                 | √                 | √                 |
| TK-400      | Twinning Kit                                          | √                 | √                 | √                 | √                 | √                 | √                 | √                 | √                 |

